

# Beginner Scales and Arpeggios

## C Major Scale

♩ = 100

Two staves of musical notation for the C Major Scale in bass clef, 4/4 time. The first staff shows the ascending scale from C2 to C3. The second staff shows the descending scale from C3 to C2. The tempo is marked as quarter note = 100.

## G Major Scale

♩ = 100

Two staves of musical notation for the G Major Scale in bass clef, 4/4 time. The scale is written across two staves. The first staff shows the ascending scale from G2 to G3. The second staff shows the descending scale from G3 to G2. The key signature has one sharp (F#). The tempo is marked as quarter note = 100.

## D Major Scale

♩ = 100

Two staves of musical notation for the D Major Scale in bass clef, 4/4 time. The scale is written across two staves. The first staff shows the ascending scale from D2 to D3. The second staff shows the descending scale from D3 to D2. The key signature has two sharps (F# and C#). The tempo is marked as quarter note = 100.

## F Major Scale

♩ = 100

Two staves of musical notation for the F Major Scale in bass clef, 4/4 time. The scale is written across two staves. The first staff shows the ascending scale from F2 to F3. The second staff shows the descending scale from F3 to F2. The key signature has one flat (Bb). The tempo is marked as quarter note = 100.

# Exercises for Tone Development

♩ = 96

played single-string (*una cuerda*)

played double-string



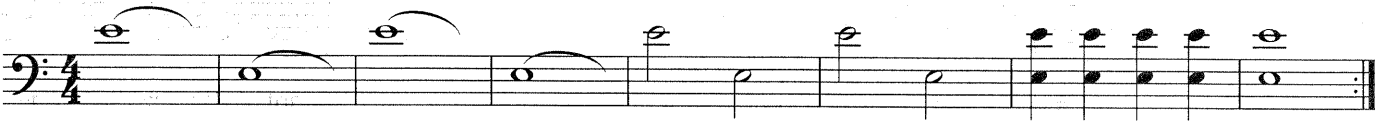
For ALL exercises: Both strings should vibrate for full duration of each note. Work for an equal volume between both strings.



Press the left hand middle finger firmly.



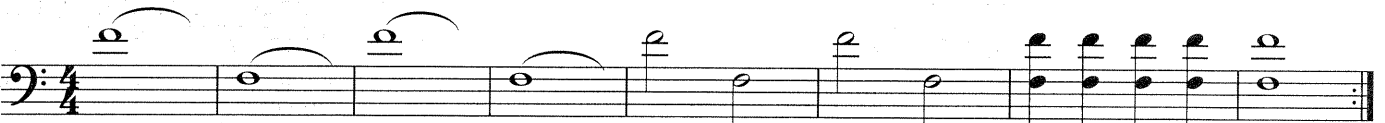
Press the left hand little finger firmly.



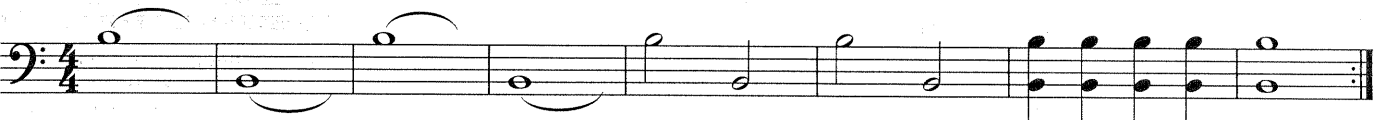
Press the left hand middle and ring fingers firmly.



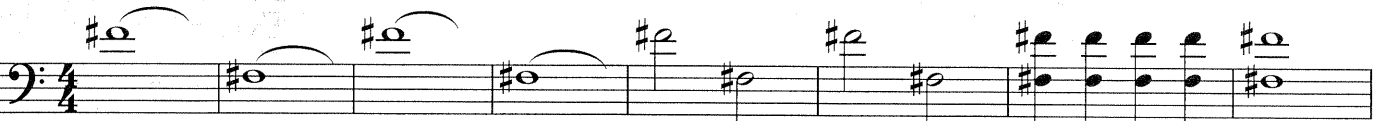
Press the left thumb firmly.



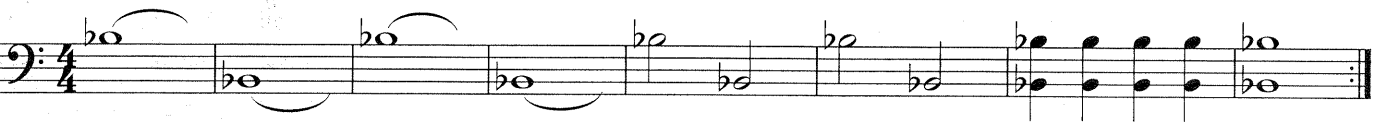
Press the left hand fingertips firmly.



Press the left hand middle finger and thumb firmly.



Press the left hand fingertips firmly.



Press the left hand index finger and thumb firmly.

# Flexibility Exercises

♩ = 80

